



- spindle resists high loads; mounted in pre-loaded angular deep-groove ball bearings ensures low-vibration operation, high accuracy, increased lifetime and low maintenance
- completely leakproof, and balanced spindle motor with high load capacity
- solid, vibration-absorbing construction
- V- and flat guides in Z and Y direction for consistently high accuracy
- longitudinal table movement over linear ball guide; linear ball track
- longitudinal table travel via cogged belt for smooth movement



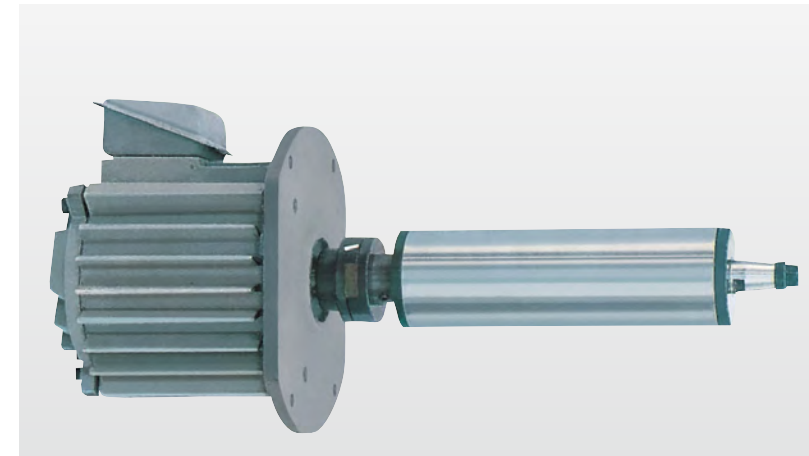
Permanent magnetic clamping plates with micro pole pitch - ideal for high-precision grinding work



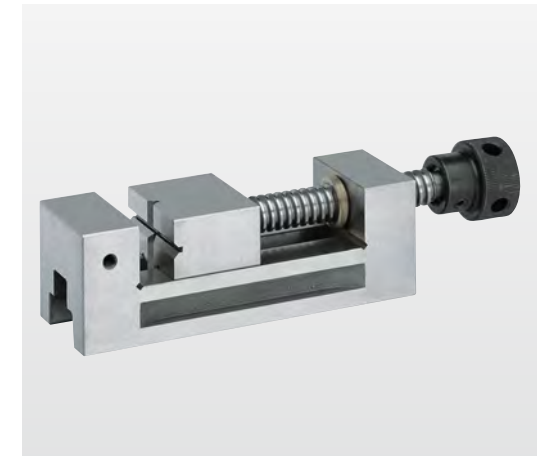
Linear ball guide for guide for smooth table travel



Angle-adjustable grinding vise (standard equipment)



Main spindle drive with advanced precision bearing



PSG 50 is shown (optional)

Specifications

		FSM 480
Working area		
Table dimensions	mm	210x450
Spindle axis-to-table surface distance	mm	470
Travels		
Travel X-axis	mm	480
Travel Y-axis	mm	230
Travel distance per hand-wheel rotation, X-axis	mm	5
Travel distance per hand-wheel rotation, Y-axis	mm	5
Travel distance per hand-wheel rotation, Z-axis	mm	1
Feed		
Scale ring division X-axis	mm	0,02
Scale ring division Y-axis	mm	0,02
Scale ring division Z-axis	mm	0,005
Accuracies		
Roughness	µm Ra	>= 0,63
Drive capacity		
Motor rating main drive	kW	1,5
Measures and weights		
Grinding wheels dimensions	mm	200x13x32
Weight	kg	730
Part No.		122802

- adjustable handwheel scales for vertical and transverse adjustments allows setting of point of origin at any position
- central lubrication
- grinding parallelism 0.005 mm / 300 mm

Standard Equipment:

exhaust vacuum, work lamp, grinding wheel 200 x 13 x 32 mm, magnetic clamping plate 125 x 300 mm, diamond dresser, balancing shaft, balancing station, machine vice 75 mm, angle-adjustable grinding vise, operating tools, operator manual

Options

for this machine, visit our website and search for FSM 480 (Product Search)